

MONTHLY MEMBERSHIP PROGRESS REPORT

District 3233E1

Results as of: 10/31/2025

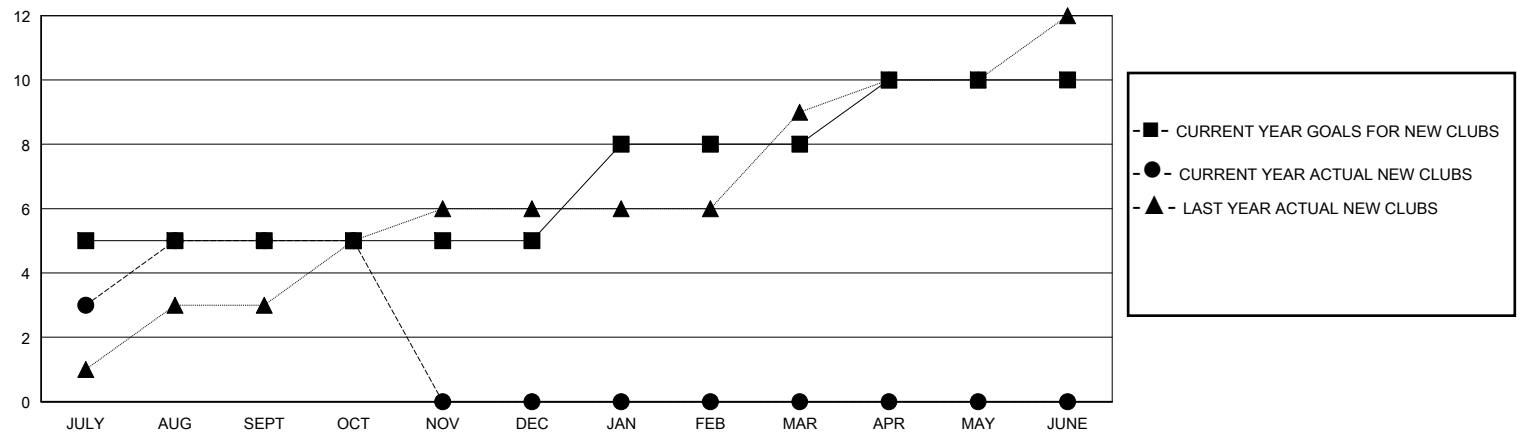
GMT:

LOCATION INDIA

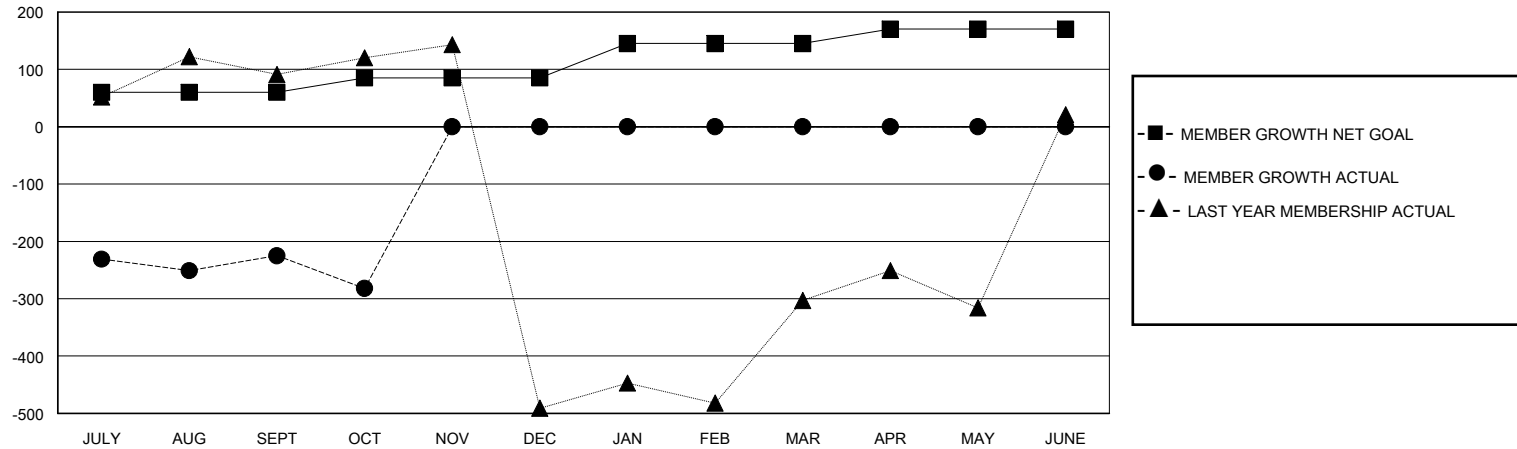
GMT CA

| Clubs                 |               |           |               | Members               |                        |                      |  |
|-----------------------|---------------|-----------|---------------|-----------------------|------------------------|----------------------|--|
| RESULTS FOR 2025-2026 |               |           |               | RESULTS FOR 2025-2026 |                        |                      |  |
| QUARTER               | NEW CLUB GOAL | NEW CLUBS | DROPPED CLUBS | QUARTER               | MEMBER GROWTH NET GOAL | MEMBER GROWTH ACTUAL | DROPPED MEMBERS ACTUAL (including transfers) |
| JULY/AUG/SEPT         | 5             | 5         | 0             | JULY/AUG/SEPT         | 60                     | 297                  | 465  |
| OCT/NOV/DEC           | 0             | 0         | 1             | OCT/NOV/DEC           | 25                     | 29                   | 71   |
| JAN/FEB/MAR           | 3             | 0         | 0             | JAN/FEB/MAR           | 60                     | 0                    | 0  |
| APR/MAY/JUNE          | 2             | 0         | 0             | APR/MAY/JUNE          | 25                     | 0                    | 0  |

GOALS AND ACTUAL NEW CLUBS CUMULATIVE



GOALS AND ACTUAL MEMBERS CUMULATIVE



|                        |     |   |                                     |                |
|------------------------|-----|---|-------------------------------------|----------------|
| DROPPED CLUBS: 1       |     | 53 CLUBS OF 220 ADDED 1 OR MORE NEW MEMBERS               | <u>GENDER DISTRIBUTION</u>          |                |
|                        |     |   | MALE                                | 4,333 (72.18%) |
|                        |     |   | FEMALE                              | 1,669 (27.80%) |
| <u>DROPPED MEMBERS</u> |     | <a href="#">CLICK HERE FOR CUMULATIVE MEMBERSHIP DATA</a> |                                     |                |
| DECEASED               | 2   |   | TOTAL FAMILY UNIT MEMBERS 1,008     |                |
| CLUB CANCELLED         | 5   |   |                                     |                |
| OTHER                  | 526 |   | FAMILY MEMBERS PAYING HALF DUES 593 |                |
| TOTAL                  | 533 |   |                                     |                |